



	EYFS and KS1	KS2
Tokens	Water– overall winners!	
Attendance 	1st place: 4 2nd place: 9 3rd place: 7	1st place: 17 2nd place: 16 3rd place: 10 Overall winners for the term 1st Ppace– Class 11 2nd place– Class 10 3rd place– Class 14
Award Winners   	<p>Every class has received a gold award for their fantastic Christmas performances– well done to everyone !</p>	10—Layla-Marie, April, Ann & Lydia 11—Robin & Nicole 12– Lilly-Rose, Daniel M, Gabriel & Finn 13—Mahnoor, Lilly, Ayla & Eloise. 14—Natalia, Mireya, 15—Emilia, Vladimir, Marvin, Luna, Melissa, Marushika & Simeon 16—Hussan & Aamilah, Whole Class 17—Matei & Razvan, Mitchell, Ruby & Whole Class 18—Elliot & Alice 19 Evie & Lemuel, Taye & Alexa 20—Ayo & Tudor, Evie & Alissa-Rae 21—Farida & Saranika, Riley & Alessio

CONTACTING THE SCHOOL

Parents/Carers when emailing the school about your child to: parents@ghyllgrove.essex.sch.uk - **please include your child's FULL NAME AND CLASS**

CHILD ABSENCE

For safeguarding reasons, it is important you inform the school of the reason your child is absent by **9.30am** on the morning of their absence. You will need to do this for every day your child is absent.

You can do this by calling **01268 450067** and **choosing OPTION 1** to leave a message on the absence line or by emailing parents@ghyllgrove.essex.sch.uk



SCHOOL LIFE



Our Christmas concerts were absolutely amazing! A huge thank you to all the children and staff for their hard work and to families for your support. The performances truly captured the spirit of the season.

Our netball team played a fantastic match against St Teresa Primary School – well done to everyone who took part! Congratulations to the Year 3 and 4 girls' football team, who came 2nd in their tournament – an incredible achievement! Children in Year 5 and 6 have become CPR smart, learning vital life-saving skills. Year 5 enjoyed an exciting visit from the Science Dome, sparking curiosity and wonder in science. Our carolers spread festive cheer by singing at the fire station and Brook lodge care home – thank you for representing our school so beautifully.

Our Christmas dinner was a joyful occasion, and the children loved their visit from Father Christmas!

Well done to all the children who joined me for hot chocolate it was a lovely way to celebrate their efforts this term. A big well done to– Jax, Lilly, Charlie, Melisa, Marushika, Ava, Layla, Mishika, Callie, Lexi, Harry, Eloise, Arthur, Irina, Emeria, Tommy, Temi, Ayrah, Lilah, Eva, Mahaujas, Hakan, Ngo, Bonnie– Rose, Kolby, Jesse and Cat Tien.

A big congratulations to our raffle winners – thank you to everyone who supported the raffle and to the staff who organised this. Please find attached the winners this year.

As we wrap up this term, I want to express my gratitude to our staff, pupils, and families for making this such a memorable and successful time. Wishing you all a Merry Christmas and a Happy New Year!

Mrs. Tidiman



DIARY DATES

5th January 2026– School reopens

7th January– Year 3 and 4 event in school

15th January– Deadline to apply for a primary school place

19th January– KS1 Dance event

19th January– 3.30– Year 4 MTC workshop

21st January– Young voices and Year 3 workshop

Sports day dates

KS2– 30th June 9.15

Nursery– 1st July 10.45am and 2pm

EYFS and KS1– 3rd July 9.15



LUNCH

New menu to follow



Parking

Please park considerately when dropping off or collecting your children. Do not block driveways as this causes inconvenience for our neighbours and can create safety issues. Thank you.



PAWS CLUB

In case of emergencies, if you require PAWS breakfast or after school club, you can call the School Office on the day to book your child in.

For regular bookings, please contact the School Office to enrol.

Breakfast Club £3 and After School Club £12 (incl. hot/cold food) a session.

LET'S SHOW OUR TEAM SPIRIT

PE KIT REMINDER

INDOOR & SUMMER KIT



- Red shorts
- White T-shirt

OUTDOOR WINTER KIT



- Plain black tracksuit (top and bottoms)
- White T-shirt

Please note: Tracksuits should be completely plain black, with no large characters, logos, or stripes in other colours

Thank you for supporting us in creating a strong sense of unity and pride. Together, we can make PE a positive and enjoyable experience for every child!



CORRECT SCHOOL UNIFORM



Ghyllgrove
Primary School

WINTER

- Grey trousers
- Grey skirt/pinafore dress
- White polo shirt
- Red jumper or red cardigan (optional logo)



SUMMER

- Red checked summer dress
- White polo shirt
- Grey shorts or skorts
- Red cardigan/jumper



A big thank you to the companies who donated the fantastic prizes for our Christmas raffle.

Nintendo Switch - Bear estate agents

£50 Smyths - Hilbery Chaplin estate agents

M&S Hampers - H&M Pumps & Compressors (Basildon)

Fruit Hamper - Waldon fruit

Champagne - Fianders plumbing & heating services

Martell - 4i water services

Volcano Woodfire Pizzas - Owner (parent of Alessio - Yr 6)

Essex BBQ - The gore

Soft Toys - PMS

Toys & games - Basildon Fire station

Lego - Grandparent of Yr 4 student

Monkey Madness vouchers—Monkey Madness



Raffle winners



Izabela- Class 4- Switch
Harper- Class 7- £50 smyths voucher
Ashanti- Class 4- £10 amazon voucher and selection box
Dylan W- Class 5- £20 Cook voucher and selection box
Saara- Class 2- Rock hub voucher and selection box
Ahmad- Class 9- Mega centre voucher and selection box
Gloria- Class 9- Mega centre voucher and selection box
Tommy T- Class 6- Megacentre voucher and selection box
Callie Class 4- Monkey madness family voucher
Simay- Class 2- Fruit Hamper
Bella- Luna- Class 7- Essex BBQ family platter
Layla- Class 6- Essex BBQ pizza voucher
Jenny - Class 21- Marks and Spencer Hamper
Amaya- Class 4- Marks and spencer hamper
Lainey- Class 2- Bottle of Freixenet and selection box
Ayla- Class 13- Brandy
Sienna- Class 4- Champagne and selection box
Ihan- Class 3- Boardgame
Sindhu- Class 6- Unicorn pig soft toy
Maya- Class 8- Gabbys dollhouse set
Muhammad- Class 4- Volcano wood fired pizza
Esmay- Class 7- Volcano wood fired pizza
Victor- Class 5- Volcano wood fired pizza
Jackson T- Class 8- Volcano wood fired pizza
Arthur K- Class 6- Volcano wood fired pizza
Samuel- Class 9- Lego city set
Sadie- Class 6- Grinch soft toy
Finn- Class 11- Whiskey
Grace- Nursery- Happyland set
Vikki- Class 15- Revlon set
Aiden- Class 4- Spiderman set
Bailey- Class 14- Guess handbag
Martina- Class 9- Frozen set
Thanasvi- Class 4- Wish doll and selection set
Myla- Class 2- Christmas soft toy
Deon- class 1- Spiderman set
Salman- Class 7- Rubix cube, playstation stickers and a selection box
Ohanna- Nurery- Winnie the pooh pictures and haribos
Deziri- Class 6- Christmas pudding sofyt toy
Lillie- Class 9- Toltry set and sslection box
Freddie L- class 9- Spiderman pillow
Kyle- Class 17- Lego car



British Sign language – Sign of the week



Each week in school we learn a new sign in class and assembly.

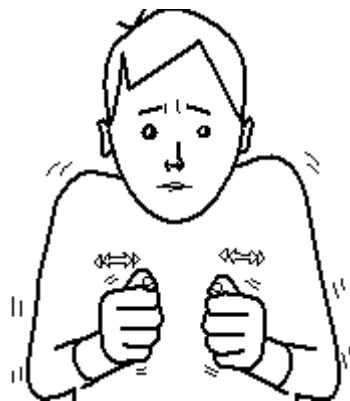
These are the words we have learnt this term.

Christ- mas



<https://media.signbsl.com/videos/bsl/signstation/Christmas.mp4>

Winter



<https://media.signbsl.com/videos/bsl/signstation/winter.mp4>

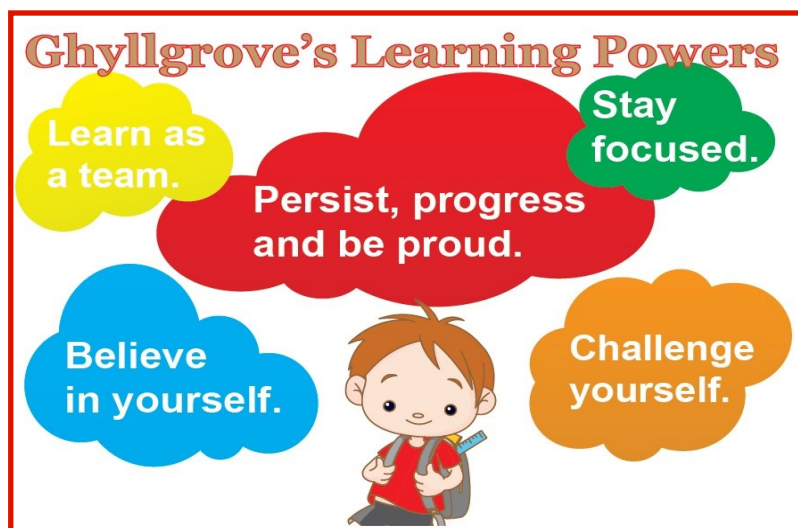
Reception Admissions for September 2026

As you may be aware, the primary school (Reception) admission round opened on **Monday 10 November 2025**, for parents of children to apply for a Reception school place for the academic year that starts in September 2026.

The statutory national closing date for applications is **15 January 2026**.

Applications can be made online via www.essex.gov.uk/admissions.

99% of parents in Essex applied online last year. All of the application information is available on the website above.



10 Top Tips for Parents and Educators

ELECTRICAL SAFETY AND DEVICES

Electrical safety is a vital topic for parents and educators, especially with the growing use of devices like smartphones, laptops, and power banks. Electrical fires are a major risk and are the cause of many deaths and injuries each year. There are reportedly nearly 20,000 accidental fires of electrical origin each year in the UK. This guide offers practical advice to help families and schools prevent electrical hazards, and promote safety when using everyday devices.

1 CHECK FOR OVERHEATING

Devices such as laptops, tablets, and smartphones can overheat if used for long periods or when charging. Ensure that children don't use devices on soft surfaces like beds or sofas, which can block ventilation. If a device becomes unusually hot, turn it off and unplug it. Overheating can lead to fire hazards if left unchecked.

2 INSTALL RESIDUAL CURRENT DEVICES

Ensure that homes and schools are equipped with Residual Current Devices (RCDs). These devices cut off the power if an electrical fault occurs, preventing electric shocks and reducing the risk of fires. RCDs should be tested regularly to ensure they are working properly. More information about RCDs is available from Electrical Safety First.

3 AVOID OVERLOADING SOCKETS

Plugging too many devices into one socket can overload the electrical system and cause a fire. In schools and homes, ensure extension leads are not overloaded and never 'daisy chain' multiple extension cords together. Educate children on the dangers of connecting too many devices to a single outlet.

4 POWER BANKS: SAFE USE

Power banks are a handy way to charge devices, but they can also pose a risk if misused. Ensure power banks are of high quality and comply with UK safety standards. Teach children never to leave power banks charging unattended, and to avoid placing them under pillows or bedding where they may overheat.

5 REGULAR DEVICE INSPECTIONS

Regularly check devices for signs of wear and tear. Frayed charging cables, cracked device casings, or devices that are slow to charge may indicate electrical problems. If any issues are noticed, stop using the device until it can be repaired or replaced by a qualified technician. This proactive approach helps prevent fires caused by faulty devices.

6 UNPLUG DEVICES WHEN NOT IN USE

Encourage children and pupils to unplug devices when not in use, particularly overnight. Devices left plugged in unnecessarily can overheat or become fire hazards, especially if left charging unattended for long periods. Simple habits like unplugging can prevent serious incidents.

7 USE GENUINE CHARGERS

Always use chargers supplied by the manufacturer or from a reputable retailer. Faulty or counterfeit chargers can cause devices to overheat, short-circuit, or even catch fire. Teach children the importance of avoiding poor-quality chargers, and regularly inspect charging cables for signs of wear or damage. More tips on safe charging can be found at Electrical Safety First.

8 WATER & ELECTRICITY DON'T MIX

Teach children that water and electricity are a dangerous combination. Devices should never be used near sinks, bathtubs, or swimming pools. Parents and educators should ensure that any electrical appliances near water sources have proper waterproof casings and are plugged into RCD-protected outlets.

9 KEEP DEVICES VENTILATED

Devices need proper ventilation to avoid overheating. Avoid stacking items on top of plugged-in devices like laptops or gaming consoles, and make sure there is enough space around devices to allow for airflow. Proper ventilation helps prevent dangerous heat build-up, reducing the risk of fires.

10 SUPERVISE YOUNG CHILDREN

Younger children may not understand the dangers of electricity, so it's important to supervise them when they are using devices. Keep electrical cords out of reach and always remind children never to put objects into electrical outlets.

Meet Our Expert

James Whelan is an experienced health and safety expert who is a Chartered Member of the Institution of Occupational Safety and Health. He provides services to educational settings as well as many other industries to help them maintain a safe working environment.



#WakeUpWednesday

The National College

See full reference list on our website

@wake_up_weds

/www.thenationalcollege

@wake.up.wednesday

@wake.up.weds

Users of this guide do so at their own discretion. No liability is entered into. Current as of the date of release: 03.12.2025

OUR OPEN DOOR POLICY

Please do contact us at any time when you have a concern, even if it appears to be minor. The “little” difficulties are easy to deal with, don't let them become major concerns.

The **Open Door Policy** is alive and well at Ghyllgrove.

If you wish to talk about your child please:-

Call (01268 450067) or email (parents@ghyllgrove.essex.sch.uk) for the class teacher to contact you.

Talk to the Phase leaders of EYFS, KS1, Upper or Lower School by calling or emailing.

EYFS

Miss Mckeon

Year 1 and Year 2

Miss Porter

Lower School – Years 3 and 4

Mr Collins

Upper School – Years 5 and 6

Miss. Robinson

Talk to the Assistant Headteachers Mrs. Patmore or Mrs. Reeder. Mrs. Patmore can support with SEN and Mrs. Reeder can support with all year groups across the school.

Talk to the Deputy Headteacher Mrs. Morley if you have already seen the Phase Leader or Assistant Headteachers.

The Headteacher is always happy to see parents/carers, but will go to the Class teacher, Phase Leader to discuss issues, therefore, please speak to these staff beforehand.

Headteacher – Mrs. Tidiman

Deputy Headteacher – Mrs. Morley

Assistant Headteacher – Mrs . Patmore

Assistant Headteacher – Mrs. Reeder

EYFS Phase leader – Miss. McKeon

Year 1 and 2 Phase leader – Miss. Porter

Year 3 and 4 Phase leader – Mr. Collins

Year 5 and 6 leader – Miss. Robinson

Teacher of the Deaf and Head of Resource Base – Mrs. Scrocca

SENCOs – Mr. Rider and Mrs. Greenwood