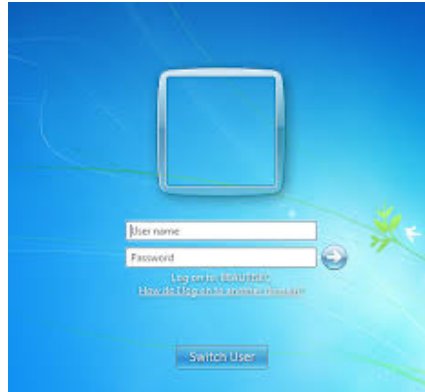


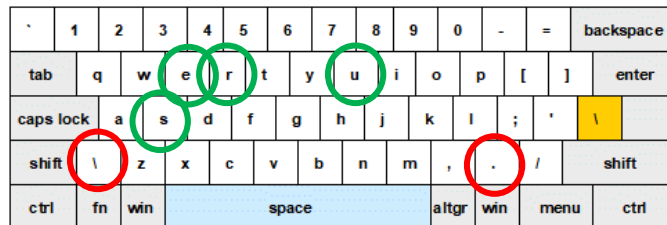
Ghyllgrove Primary School

Guide to Log-in for Home Access Laptops

1. Plug in your laptop to a mains plug.
2. Turn on your laptop and wait for it to load to this screen:

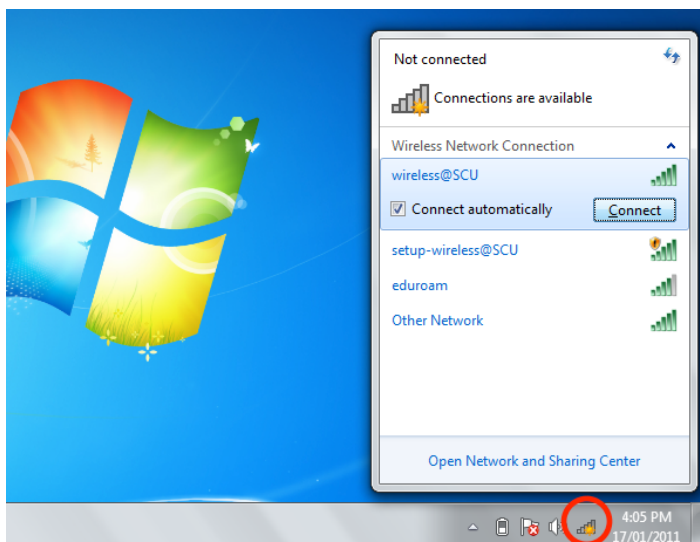


3. For 'Username', type in the following: **.\user**



**Colour for illustration only*

4. For 'Password', leave the box blank.
5. Press *Enter* or click the arrow.
6. Once the desktop has loaded, connect to your home Wi-Fi/Wi-Fi dongle/Wi-Fi hotspot/smart-phone hotspot.



7. It is best to save to a USB/external hard-drive/Google Classroom drive. Data retention on the device after shut-down is likely but cannot be guaranteed.
8. For further support, please contact the School Office.