

Welcome to Ghyllgrove Primary School

We are delighted that you have chosen Ghyllgrove Nursery for your child and hope that both you and your child will be happy with us.



At Ghyllgrove we believe that every child deserves the best possible start in life and our aim is to provide the support to fulfil that potential. Our committed staff work hard to provide a rich varied curriculum, which engages all pupils and makes learning a fun and memorable experience.

"Ghyllgrove is a school where staff are dedicated to providing the best for all children. We aim to ensure that our children are safe, happy and are allowed to achieve to their potential."

As parents, you are the first educators of your children and you know them better than anyone else. We strive to build a close partnership with you to ensure that your child will receive the best possible start in their school life.

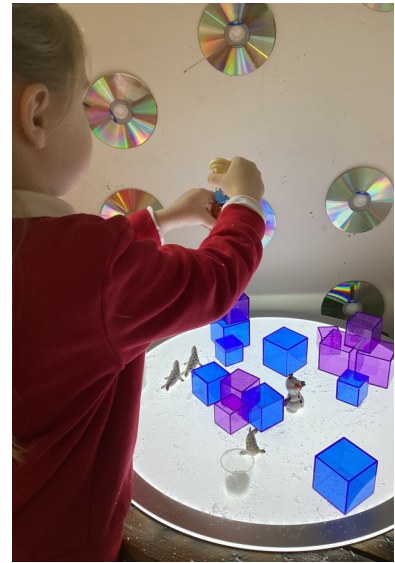


There are seven areas of learning in the foundation stage.

Prime areas: These areas are crucial for igniting children's curiosity and enthusiasm for learning, and for building their capacity to learn, form relationships and thrive.

They are:

- Personal, Social and Emotional Development
- Communication and Language



Specific areas: These are essential skills and knowledge for children to participate successfully in society.

They are:

- Mathematics
- Literacy
- Understanding the World
- Expressive Arts and Design



It's Learning Time!

Children will learn through a play-based curriculum in which they are encouraged to learn through first-hand experiences and exploration.

During play children's concepts, skills, attitudes and achievements are extended.

The topics we cover in nursery are based around the seasons of the year, Autumn, Winter, Spring and Summer. We explore all the lovely things that happen in our environment, such as the changing colours, weather, animals and celebrations.



We provide children with a rich and engaging environment both inside and outside!

Outdoor Learning

The children take great pride in looking after our garden!

The children have access to the garden every day, the garden door is open all session and this allows the children to free flow between the classroom and garden environment.



Our outdoor area reflects the learning taking place in the classrooms.

Our garden environment provides children with a range of opportunities for playing, exploring, and learning.





Please make sure that your child has the following items in school:

- Spare clothes including tracksuit bottoms, t-shirt and underwear.
Please put your child's spare clothes in a clearly labelled bag. This will be kept on their peg.
- Wellies for the garden

**School uniform, school PE kits and book bags
can be purchased from:**

<https://www.pbuniform-online.co.uk/ghyllgrove>

Alternatively, you can buy our school uniform colours from local superstores such as Asda, Sainburys or Tesco.

We look forward to welcoming you and your child into our friendly and fun Nursery here at Ghyllgrove Primary School.

